



Charnock House,
Shepherd's Bush, W12

Asking Price £380,000



3



1



1



D

Charnock House, Shepherd's Bush, W12

Asking Price £380,000



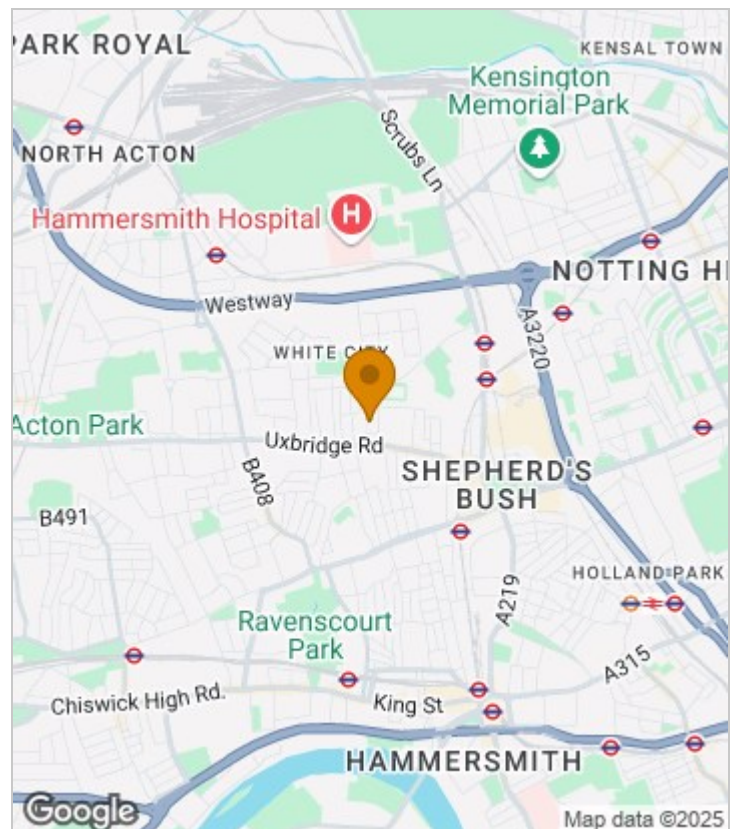
Summary Description

Charnock House, W12 - Set on the third floor of this purpose built block is offered this well-proportioned three double bedroom apartment. The flat offers three well-proportioned bedrooms, fully fitted kitchen, and spacious reception room with access out on to a private West facing balcony. In our opinion this property would make a great rental investment or first time buy. The property further benefits from being offered chain free and a long lease.

Charnock House is located within a short walk from a wealth of shops, bars and restaurants in central Shepherds Bush or Westfield shopping centre. Transport wise, the location is extremely well served by the Central Line tube (White City), Hammersmith and City Line (Shepherds Bush Market) and a number of excellent bus routes from the Uxbridge Road or Wood Lane in to Central London. For the motorist, The A40 is only moments away from the property.

Leasehold 101 yrs, Service Charge £2,242pa Ground rent £10pa

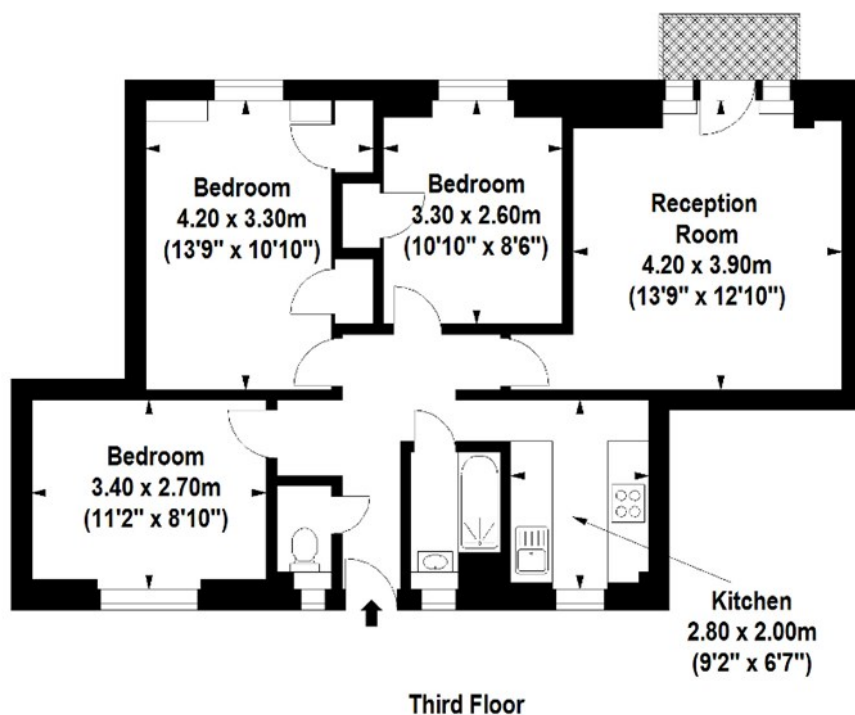
Area Map





Floor Plan

jorgensenturner
estate agents



For Identification Purposes Only. Not To Scale. © www.alanaiken.com 2016

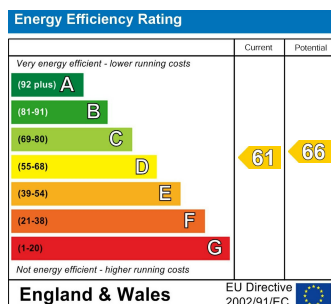


Charnock House, W12

Approx. Gross Internal Area
66.52 Sq M - 716 Sq Ft

TOTALVISTA

Energy Efficiency Graph



Viewing

Please contact our Sales SB Office on 0208 740 8740 if you wish to arrange a viewing appointment for this property or require further information.

- THIRD FLOOR APARTMENT
- PRIVATE WEST FACING BALCONY
- MOMENTS FROM WESTIFELD WHITE CITY
- CHAIN FREE
- LONG LEASE
- THREE DOUBLE BEDROOMS
- CLOSE TO IMPERIAL COLLEGE LONDON
- WHITE CITY CENTRAL LINE TUBE
- SHORT WALK TO WORMHOLT PARK

For further information contact:

Sales SB, 234 Uxbridge Road, Shepherds Bush, London, W12 7JD

Tel: 0208 740 8740 Email: enquiries@jorgensenturner.com

<https://www.jorgensenturner.com/>

Disclaimer

These particulars, whilst believed to be accurate are set out as a general outline only for guidance and do not constitute any part of an offer or contract. Intending purchasers should not rely on them as statements of representation of fact, but must satisfy themselves by inspection or otherwise as to their accuracy. No person in this firm's employment has the authority to make or give any representation or warranty in respect of the property.

